

# Humbleton & Flinton Newsletter

July 2019

## In This Issue

This is your village newsletter - it is intended to highlight information and events that matter to our residents. In this issue are articles about local oil/gas exploration, the Biomass Plant, our Community Plan and the work to develop Humbleton old school and pavilion as well as highlights from the latest Parish Council meeting, local issues and forthcoming events. We hope that you find it useful and informative. If you have any suggestions, contributions or want to advertise your business please contact the Parish Clerk via the Parish website (<http://www.humbleton.org.uk/>)

## Rathlin Energy - update

Rathlin Energy (UK) update – the last meeting was 24<sup>th</sup> April with several new committee members. The operations provided an updated about what work had taken place and the next steps. This was about the rig mobilization and the current site layout. Several questions were asked about the volumes and understanding the need for hydrochloric acid, which was explained as it was used to clean up the perforations: a standard oil field technique. The environmental permits clearly defined the volumes of acid to be used and stored on site.

Questions were asked about what was in place to avoid the technical issues encountered at the first well drilling – the main issue had been the requirement to use a flare for clean-up which was not adequately suited for that purpose. The Environment Agency now acknowledged that the current permit provided for 2 separate flare units, one for well clean up and one for extended well test.

Community concerns were being dealt with as raised, two local residents had called the office regarding lighting concerns and this had been addressed. The traffic management plan allowed access to site 24-hours per day, seven days per week, however that the police had closed the road on 8<sup>th</sup> April and traffic had been diverted. This had resulted in 2 lorries being released at one time under police construction (otherwise the standard is at 10-minute intervals).

Environmental monitoring continues to be taking place on site including ground water, surface water and air monitoring. Noise monitoring was also in place.

It was noted that when roads are closed this is only following police decision, which was confirmed by the police present at the committee meeting. Anyone with concerns about lighting / noise should contact the emergency helpline (0800 195 9154) immediately so that the site team can respond quickly.

Plans were discussed including what the density of the well sites could look like – the estimated reservoir is approx. 4,000 acres, which could translate into 6 or 7 well bores. The aim would be to minimise the number of sites and optimise the number of wells per site. A Friends of the Earth meeting in New Ellerby had raised concerns where examples of American fracking had been shown to the residents. The difference between American and UK planning permission and oil / gas exploration was discussed, confirming that the UK government would determine what future activities would be undertaken and that there is no intent or permission to conduct fracking here. It was mooted that if the site develops as expected that residents could be invited on a bus trip to visit the largest onshore gas field in production in Lincolnshire, as it would help to reassure residents.

One of Rathlin's partners made the headlines recently by announcing that the West Newton site was the biggest oil find in the UK – this was made days after our usual committee meeting where it was announced that once the testing was completed it would take approx. 6 weeks before the extent of the find would be known – nothing has changed. It appears that Rathlin's partner was keen to announce a potential significant find but nothing is certain yet. Many of you will have received a notice from Rathlin to explain this in more detail; for those who didn't the Rathlin website has the same information under 'Latest News'.

## Community Plan Update

A year ago, following a period of evidence gathering and consultation, the Community-led Plan for Humbleton and Flinton was produced.

It is useful for anyone who wants to understand about this community and what matters to us; it can be used to support grant applications, approaches to the County Council and other decision-making bodies.

The current Plan can be found on the Parish website at <http://www.humbleton.org.uk/community-led-plan.aspx> and contains a summary of how it was produced, the key issues raised and an Action Plan that allocates actions to each of the key issues; highlighting those that were judged to be the highest priorities in 2018.

12 months later and it is time to update our Plan to keep it relevant and useful. Some things have changed and some remain the same. A draft 2019 Plan has been created and will be displayed at the Family Fun Day as well as being loaded onto the Parish website so that it can be read and comments and suggestions made.

The top 3 Action Items last year were; Speeding, Broadband and creating a Community Building. This year it looks like (fingers crossed) Broadband will be less of a concern and plans are being submitted for a Community Building, so the priorities are likely to change. What do you think they should be – please read the new draft Plan, see what you think and make some suggestions so that your voice can be heard.

## Heron's Educational Trust

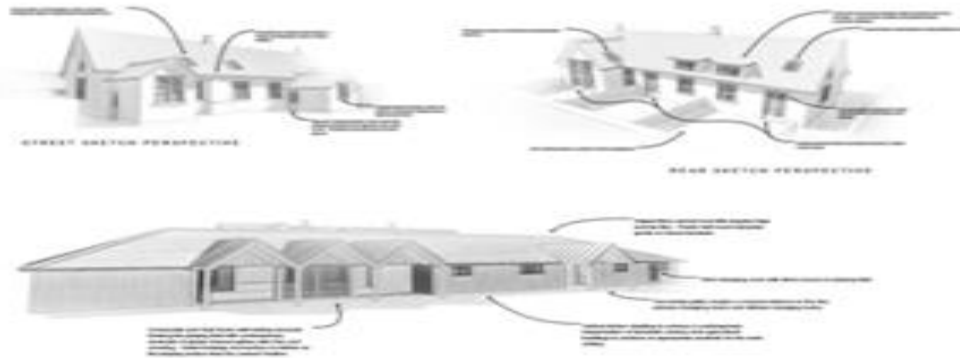
The Heron's Trust continue to make progress with the project to build our new Community & Sports Hall and the conversion of the Old School into three rental homes. Many of the suggestions made by villagers, potential donors and other interested parties have been incorporated and we are now in the position where we can apply for Planning Permission - a big step forward!

It is intended to submit the final plans to ERYC by the end of July and everyone will then be able to see the detailed drawings on the Council's Planning Portal.

It is hard to be precise about timings for the completion of the project as it depends on the Council, the subsequent tendering process and our ability to secure funding from a number of donors. That said, we are optimistic about all 3 areas and we estimate that the new building and the conversion may be complete as early as the end of 2020 - but we are realistic enough to accept that it may be a few months later as it is a complex project and we are very keen to get it absolutely right as we know how important this will be for the village.

# Francis Heron Trust

Development Project Update – July 2019



We will keep you posted as the project develops. Thanks again, The Heron's Trust.

## Notes from St Peter's Church

The church continues to be used with a local family wedding more recently.

An afternoon tea party held at the end of June raised £200 towards the upkeep of the church – the cakes and scones as usual baked locally and were delicious.

At the last event – Orbisons Legends in early July, all – with great music performers, wine, raffle, tombola and a light supper, had a good night.

We are blessed by the fact that the church is light, spacious, and not too cold even in winter. All these events have taken place despite the fact that the only running water is outside the church and there is not toilet facility. Plans have been drawn up to install a toilet in the church as well as a tiny kitchen and server area. The costs of these changes are significant and whilst fund raising with events can raise some funds, we are going to need external funding.

We would love to hear from anyone who would like to help us fund raise or has some good ideas about how we might do so. Suggestions please to the Vicar on 01964 601381 or to Brenda Frear.

Do remember that in the summertime the church is open at weekends whenever possible. If not just, apply to Janet Beadle at Forge Cottage for a key.

## Visit to Tansterne Biomass – 24 June 2019

All residents will be aware of the existence of the Tansterne Biomass Plant on the border of our parish. Many will be aware that, despite objections from the Council, the Government gave permission to build and operate it because it is required to meet national green energy generation targets. It is here, we can either moan about it or not – but it will still be here.

Keen to see what goes on there, a group of four Flinton residents was invited by the manager to visit the site and be shown how it all works and what the future operation will look like. We spent about 2.5 hours on site and were spoken to about the structure of the company, the operation of the site, the environmental controls and the sourcing of fuel. We also learned that many of the rumours that have been circulating locally about the Biomass plant are not true!

Let us address those rumours first:

- This plant can only burn a specific type of waste wood (Grade C). It can't burn straw, other biomass or lower Grade wood products (such as tanalised)
- The chimney is the standard size for this type of wood-burning plant
- The reason the site is not yet at 'full operating capacity' (FOC) is because part of the turbine broke. It will be fixed in the coming weeks and they expect to be at FOC by October. The site owners haven't run out of money, the site isn't about to close or be left dormant



The operation of the site is, in essence, very simple. Waste wood arrives at the site, is burned to generate heat, which turns water into steam, which rotates a turbine, which creates electricity – which is then fed directly into the national grid. When fully operating, the site will generate enough electricity to power 40,000 homes!

Remarkably, the whole site has only two furnaces and associated steam-generating processes that feed into just one small turbine that generates all that electrical power. The 'simple' operation looks much more complex when you walk round the site however – pipes, conveyor belts, hoppers and ducts all connect together in amazing intricacy (pictured above) with every part explained to us as to how it fits into the wider process. All of this is monitored round the clock by sensitive systems that ensure that everything is running, as it should be; all controlled from one position in the small central control room. The site employs 30 people but only around 7 will be on shift at any one time.

As mentioned, all of this starts with the arrival of truckloads of waste wood, which comes from building waste, kitchen manufacture and the like; all sorted and processed to ensure that no pollutants, bits of metal or other undesirable additions get into the system. Tonnes and tonnes of waste wood are required every day to keep the system generating. The associated impact on local residents is of course that all of that has to be driven along our local roads.

Once fully operational later this year, we can expect 80 lorries per day (7am to 7pm, Monday to Friday) to route along the B1238 through Flinton and Sproatley (ie 40 in each direction each day). We spoke to the site team about our concerns on this issue and they agreed that they would do what they could to help.

On the positive side, our local plant will generate a lot of much-needed electricity for the country; it uses waste products and will help to meet our recently announced climate change targets. It is very clear that the management of the plant are absolutely focused on environmental issues.



From the arrival of the fuel through storage, burning, waste management and emissions there is a very thorough process for ensuring that any potential pollutants and waste generated are kept to an absolute minimum – and well below the levels allowed by the Environment Agency's licence (who also monitor the site continuously). The current upgrade process is reducing waste and emissions even further. They are also very safety conscious with everything considered from protective clothing and briefings to having their own fire engine.

Looking to the future, the site manager said that he is keen to engage with local schools as part of their STEM initiatives and he would be open to some form of consultative committee of local residents to simplify communications on a wide variety of issues. The Parish Council will be discussing how to take this forward with neighbouring villages in the next few months.

Overall, this was a really interesting visit and there is much to be positive about our new 'neighbour'. We were welcomed warmly by the management and every effort was made to explain what the site does and how they are developing it in the future. We were reassured by the environmental and safety controls but concerned by the potential impact of the increased traffic levels – addressing this will no doubt be the subject of many discussions to come.

Feel free to join the conversation; it remains one of our top action items on the Community-led Plan update for 2019. If you have any questions or concerns about the Biomass Plant, please email Lisa Brazier at [lisa.brazier.biomass@btinternet.com](mailto:lisa.brazier.biomass@btinternet.com) who will be happy to liaise with them on your behalf.

## Parish Council News

On 23 May, the Parish Council held its AGM & parish meeting at Maple Garage at 7pm, with no residents in attendance.

The minutes are on the website as part of the transparency regulations but the highlights mentioned below:

The election results were announced, noting that Jane Hart had confirmed her intention to retire as a councillor – it was agreed to send a card and flowers from the council, thanking Mrs Hart for all her support and work over the many years for the residents.

The co-option of a replacement councillor was discussed as we had only had one application, whose details were read out. It was agreed to arrange a separate meeting with the individual and talk through the application. This was held on 4<sup>th</sup> June and Mrs Steph Wood was co-opted to the council.

The accounts and annual return were presented for the financial year, having been circulated prior to the meeting. There was nothing unusual in the accounts but it was noted that we had received the insurance funds for the bus shelter, which had not been invoiced by the year-end – hence the better than expected bank balance at the year-end (£4,873.86). This has been paid since the year-end. The coal deliveries for 2016, 2017 and 2018 invoices are still outstanding despite being chased. The annual governance statement was read and acknowledged by the Councillors. The accounts were approved and Clerk to submit to the external auditors.

The Chair gave a brief summary noting the work completed or reviewed during the year. Ongoing projects include the parish clock and the community development plan.

It was resolved to increase the clerk's wages by £5/quarter to £385/quarter. It was resolved to retain the rent on the Flinton land at the same rent.

The parish council meeting followed with fly-tipping continuing to be a problem. The Freedom of Information (FOI) request by the clerk showed that our parish had 0.7% of all the incidents in East Riding in the current year, and 1% in the prior year. Given the small size of our parish, this seems huge. It was noted that we would continue as a parish to do litter picks in Humbleton and would ask Flinton residents to consider doing the same.

Highways – it was noted that Mike Peeke had retired and had been instrumental in finally achieving the trod upgrade. The yellow marks on various roads in the parish have been confirmed that Long Lane, Lelley Road, Main Road, New Lane and Danthorpe Road are all due to be dressed during this financial year. The signs are already in place for some of the roads. This is very welcome as some of our roads are in a dreadful state of repair.


Speeding – still a major concern in both villages. ERYC do not believe the scores and data in Flinton support our assertions that speeding was a significant issue. Despite this, the clerk had requested ERYC re-consider given the biomass was now in operation since the original testing and the type of vehicles had change to larger lorries. One visit was made but was considered no significant increase in traffic (probably due to the biomass station being inoperable). This information was shared with PCso Bainton who had offered to keep monitoring the speed and to provide a visible presence where possible.

Police reports / neighbourhood watch – nothing significant has been reported in our parish, however fly tipping continues to be a problem as mentioned above. Hare coursing remains a national problem but has reduced in the last year.

Next meeting is at the 5 September at Maple Garage – all are welcome.

## Dog Fouling

The dog warden has visited the village several times trying to catch the inconsiderate dog owner and will continue to keep making visits. The warden has also put up extra posters reminder owners to clean up after their dogs.



Please if you notice, someone being inconsiderate let me know – if you can tell me the dog, the owner and the date / time, I will report it to the dog warden to follow up.

## Family Fun Day

Thank you to everyone who attended on Sunday 14<sup>th</sup> July – the weather was kind and the sun shone most of the day....huge thanks to Mally and Arron for helping erect the marquee in the morning, it was really appreciated.

We had an excellent turnout and it was great to see so many from the village, Flinton and Lelley too, including family and friends. We had a wonderful afternoon of traditional races with lots of winners awarded medals, and everyone joined in the spirit of the event.

The BBQ was almost a sell-out using locally sourced burgers and sausages from Alan Jones, Preston. The tombola sold out very quickly, and the wonderful display of raffle prizes helped contribute to the day – with lots of bottles and boxes of biscuits, including the star prize of a free MOT from Lowgate Garage. As the weather was so warm the sales of drinks and ice creams were popular.

Those of you looking at our facebook page will have seen the wonderful pictures that Chris Wilkinson took on the day – they represent a snap shot of moments throughout the day – thanks to Chris for such a keen eye and some wonderful pictures.

Thank you to those that stayed and helped take the marquee down (it is easier than putting it up, even after a couple of beers!).

Did you spot the information about the Community-led plan and make comments?

All the profits raised at this event (over £300) contributes to the next event – the Christmas light switch-on with a planned date (to be confirmed) of Saturday 30<sup>th</sup> November. Get the date in your diaries and we look forward to seeing you all there.

## Facebook

The Humbleton Hub has been set up on facebook as a closed group. If you are on facebook and want to join in – it is a private group but if you ask to join the group and are a resident then you will be accepted. Go and have a look and is currently used to add events, add photos and report issues. We would encourage all residents to get involved.

## Poppy Collection

Brenda Frear has asked if we could record that she collected £54.00 in November for the poppy collection – thank you to everyone who contributed.

